

Xploit

ZE·RO

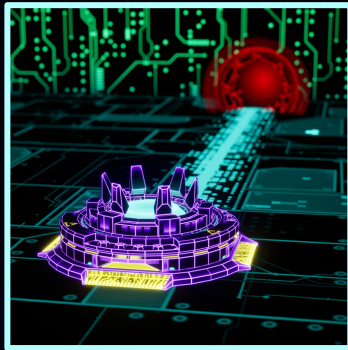


TIPS & TRICKS

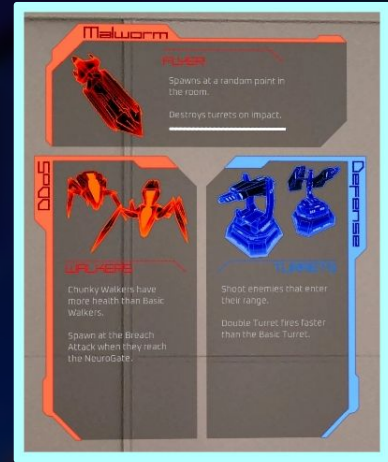
“He who seeks counsel before battle has already won half the victory.” – Sun Tzu

Here are the most useful tips, filtered from the Dark Web, to help you successfully beat every level.

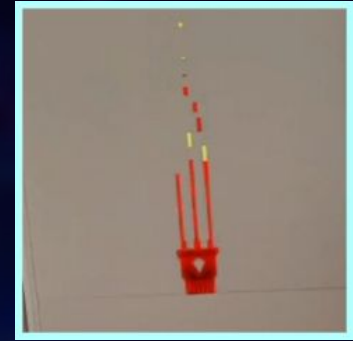
Don't skip the information shown at the start of each phase. At the beginning of every level, you'll find important details about the enemies you'll be facing and the turrets that can help you defeat them effectively.



How to choose the Neurogate's location. At the beginning of each game, you'll need to choose where to place the Neurogate. The ideal spot depends on the shape of your play area and your personal preferences, but start by placing it in the center of the room so there's plenty of space on both sides of the enemy attack path to build turrets. If you place the Neurogate in more complex spots, such as corners, some sections of the path may end up out of range of your turrets.



Don't pick up corrupted memory! After some time, memory cores become corrupted and turn red. These corrupted memories will penalize your stock. Don't pick them up!

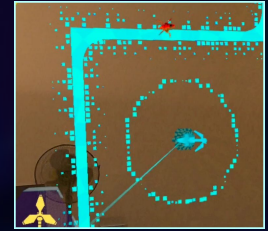


At the start of a game, don't place any turrets until the enemies are within range, focus on collecting memory first. Since turrets have a limited lifespan, placing them too early is pointless because they won't have any enemies to shoot at. The longer you wait before deploying them, the longer they'll last when they're actually needed.

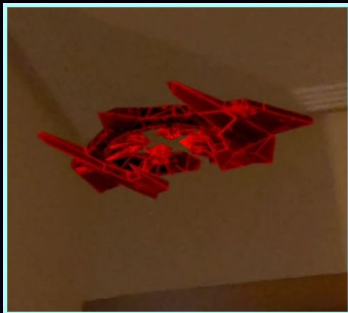
Keep an eye on the lifespan of your defenses. A circle around each turret indicates how much lifetime it has left. When this time runs out, the turret self-destructs, so stay alert, you'll need to replace them when that moment comes.

Don't spread your defenses too far apart. If you keep your turrets concentrated in the same area of the room whenever possible, it will be easier to defend them from aerial attacks. It will also be simpler to spot which ones are about to expire without having to scan the entire room. Every second counts.

The most effective spots to place your turrets are usually the corners of the attackers' path. Placing turrets at these corners allows them to cover a larger section of the route.



Prioritize defending your turrets from aerial enemies over collecting memory. A turret costs more memory than what you gain from picking up a single memory core. If you have to choose, always prioritize dealing with aerial enemies rather than collecting memory.



Head to the Mothership. Motherships are extremely dangerous because they launch multiple missiles at your turrets. Keep an eye out for incoming Motherships and try to take them down before they have the chance to deploy their missiles.